



RESOURCES & INFORMATION

Collection Service Providers

Waste Management of Alameda County, Inc. (WMAC)
 Trash & Compost Collection Services (510) 613-8700
 csnorthbay@wm.com

Find a Recycler.....(510) 238-SAVE(7283)
 OaklandRecycles.com or Recycling@Oaklandnet.com

Free Bin Cleaning & Repair

Repairs or annual free cleaning service to subscribers..... (510) 613-8700
 csnorthbay@wm.com



Hazardous Waste Drop-in for Businesses

Oakland Hazardous Waste Facility (800) 606-6606
 2100 East 7th Street, Oakland 94606. Open every Tue –Sat. Hours: 9 am - 12 pm.
 Visit StopWaste.org/HHW for the drop-in form & fee schedule before you go.

Fats Oils & Grease (FOG)

Restaurants and food service establishments can help avoid sewer overflows, backups and costly repairs, through proper management of FOG, by:

- Installing used oil recycling containers and grease control devices to prevent FOG from entering the sewer
- Hiring an approved liquid waste hauler to empty used oil recycling containers. Grease control devices should be emptied regularly by an approved liquid waste hauler
- Keeping a service log and making it available to an EBMUD inspector



For more information about managing FOG, and to find an approved liquid waste hauler, visit oaklandnet.com/FOG.

Ban on Expanded Polystyrene Foam

By Ordinance, Oakland food vendors may not use expanded polystyrene foam (Styrofoam™) disposable food serviceware.



For more information(510) 238-SAVE (7283)

Para obtener una copia de este folleto, visitaOaklandRecycles.com
 Để lấy bản sao của tài liệu này, xin truy cậpOaklandRecycles.com
 有關此副本宣傳冊，請訪問OaklandRecycles.com



SETTING UP SERVICE

Composting Required for Businesses Effective July 1, 2016

Businesses and institutions that generate significant quantities of organic materials, such as food scraps or plant debris, must subscribe to compost collection service required by law per Alameda County Waste Management Authority (ACWMA) mandate.

Setting up a Compost Collection Service

- 1. Identify Your Needs & Subscribe to Services**
 - Contact WMAC at (510) 613-8700 to schedule a free on-site assessment
- 2. Post Signs, Label Containers and Train Staff**
 - Establish compost/recycling/trash locations
Apply appropriate signage and label(s) on your container(s)
 - Train your staff to follow correct separating procedures
Line compost containers with clear plastic or BPI certified compostable plastic or paper bag
- 3. Monitor**
 - Ensure only compostable materials are included. Do not put in recyclables nor trash such as rubber gloves, conventional plastic bags, etc.

Free Indoor Green Bins Grant

For a limited time, free indoor bins are available to qualifying Alameda County businesses and institutions for the collection of food scraps, compostable paper and plant debris (“organics”). A variety of containers and lids are available – up to a value of \$500 per approved site!

Apply online at RecyclingRulesAC.org/containers.



Need more help?

Contact the Oakland Recycles hotline at (510) 238-7283 or via email Recycling@oaklandnet.com.

Free Technical Assistance!
 Call WMAC (510) 613-8700 or email: csnorthbay@wm.com

Recycling at Fenton's Creamery



- Composting for Businesses is Now Mandatory!
- Free Technical Assistance to Setup Service
- Free Indoor Containers for Qualifying Businesses
- Free Annual Bin Cleaning for Subscribers



250 Frank H. Ogawa Plaza, Ste. 5301, Oakland, CA 94612

YOUR RECYCLING TEAM
 WASTE MANAGEMENT
 CALIFORNIA WASTE SOLUTIONS



Commercial Recycling Program Guide



YOUR RECYCLING TEAM
 WASTE MANAGEMENT
 CALIFORNIA WASTE SOLUTIONS



COMPOST

堆肥 ABONO PHÂN HỮU CƠ

Compost food scraps, food-soiled paper, paper to-go containers and cartons, yard debris and untreated wood

Composting is Required!

Composting is required by State AB 1826 and by Alameda County Waste Management Authority Ordinance 2012-01

Compost Collection Best Practices:

1. Separate Compostable Materials
 - No glass, plastic, metal or trash in compost
2. Collect in Your Indoor Containers
 - Line containers with clear plastic bags, paper bags, BPI certified compostable plastic bags or use no bag at all
3. Empty into Compost Cart for Pickup
 - Monitor to ensure compost cart contains only compostable materials



Composting at Calavera



DO NOT INCLUDE

Any recyclables or trash.
See Programs & Resources Panel for Hazardous Waste.

Free Technical Assistance!
Call WMAC (510) 613-8700 or email: csnorthbay@wm.com



RECYCLE

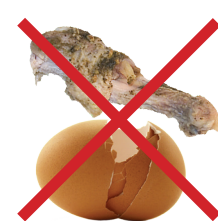
回收 REICLAR TÁI CHẾ

Recycling is required by State AB 341 and by Alameda County Waste Management Authority Ordinance 2012-01

Recycle plastic containers, aluminum/metal food containers, cardboard, clean paper, glass food and beverage containers



Recycling at Chop House



DO NOT INCLUDE

Any compostable, non-recyclable or hazardous items.
See Programs & Resources Panel for Hazardous Waste.

See Recycling Provider Directory at OaklandRecycles.com



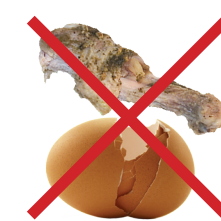
TRASH

垃圾 BASURA RÁC

Non-Recyclable & Non-Hazardous Materials



Discarding gloves at Lugomare



DO NOT INCLUDE

Any compostables or recyclables.
See Programs & Resources Panel for Hazardous Waste.

Call WMAC (510) 613-8700 or email: csnorthbay@wm.com